

SUMMER 2022



SERVING CHILDREN IN A UNIQUELY CHRISTIAN ATMOSPHERE

BUILDING FAMILY  
RELATIONSHIPS  
CHANGING LIVES  
CREATING FUTURES



published annually by the  
TENNESSEE CHILDREN'S HOME

**Brian L. King**  
*President*

**Eric Brown**  
*Financial Director*

**Chris Doughtie**  
*Director of Development  
and Community Education*

**Jeremy Northrop**  
*West Tennessee Executive Director*

**Mike Yuhas**  
*Spring Hill Campus Director*

**Richard Johnston**  
*East Tennessee Executive Director*

**RozeEllen Beamer**  
*North Central Campus Director*

Articles in Pathways magazine may be copied and distributed provided all material is used exactly as it appears in the publication (i.e., no changes and/or edits). Additionally, portions of articles may be used in church bulletins/publications provided that complete sentences and/or paragraphs are used and titled with the same title used in the magazine, and no changes or edits are made. In all instances, copyright credit must be given to Pathways magazine: Tennessee Children's Home, Spring Hill, Tennessee with the year of publication included.

**PATHWAYS INFO**

P.O. Box 10  
Spring Hill, TN 37174  
931-486-2274

bmischke@tennesseechildrenshome.org  
cdoughtie@tennesseechildrenshome.org

Tennessee Children's Home is a non-profit 501(c)3 organization.

All Scripture quotations are taken from the  
New King James Version® unless otherwise noted.

Copyright © 1982 by Thomas Nelson.

All rights reserved.

Photos: © getty images



WATCH US



FOLLOW US



LIKE US

STAY INFORMED ABOUT THE GOOD WORK AT  
TENNESSEE CHILDREN'S HOME. JOIN PATHWAYS ON  
FACEBOOK, TWITTER, INSTAGRAM, AND YOUTUBE



**FROM THE PRESIDENT**  
Brian L. King

In October 2021, the Spring Hill direct care staff and all of the young people moved to the new campus. We had a ribbon cutting on October 22, and an Open House on October 30, with many special people in attendance. We appreciate the legislators and

local representatives that spoke at this event and all of the supporters that were able to attend.

The new campus in Spring Hill has allowed us to give the *Residential Counselors* additional space for their family as well as give our young people their own bedroom and bathroom. The facilities are now up to speed with the quality of our services, which I believe to be some of the best in the state of Tennessee. Thank you for helping us get to this point. Currently, we have raised \$3,600,000 of the \$4,000,000 needed to pay for the new campus. There are still naming opportunities for our group homes and rooms inside the main building. We are now in the beginning stages of building the Corporate Office and Maintenance Building, which were put on hold, due to lack of funding. We have had some funds come in that were specified for these buildings, and we need an additional \$550,000 to cover the costs. We are less than \$1,000,000 away from being able to pay for the new campus. God has truly blessed us with good friends.

Our program in Clarksville, Tennessee has doubled in size from last year. We are serving 25 adults and children in the **Independent Living and Displaced Families Programs**. *Roze Ellen Beamer* and staff are doing a great job making sure our programs are able to provide them guidance and opportunities to function in society.

Our program in West Tennessee is finishing up on the much-needed renovations that started before Covid in 2020. We are trying to raise \$200,000 to complete this project. We are at capacity and need to open the third house as soon as the renovations are complete, hopefully in September 2022. *Dr. Larry Ivery* retired in June 2022, after 31 years of service with West Tennessee Children's Home children and families, during which he filled the roles of Executive Director, Treatment Director, and Program Director. We will miss him, but happy that *Todd Johnston*, who began as Executive Director in January, is here to carry on the work.

The renovations on the East Tennessee campus have also been completed, making all three houses similar. Each youth has their own bedroom and bathroom. They have been able to hire some excellent help over the past few years and the program and services continue to improve and they are now almost at capacity.

Once the West Tennessee renovations are complete, all of our residential programs statewide will have homes that give each youth their own bedroom and bathroom, providing safety and privacy for our youth and staff.

**Tennessee Children's Home** has some of the best programs in Tennessee, mostly due to our excellent Christian staff. We currently have several positions open and most of them are in the Spring Hill area. Please think about working with a Christian organization and making a difference in a young person's life. Check out our website for more information. •

Thank you for your support.  
God Bless You!



---

### OUR MISSION

*Tennessee Children's Home is committed to improving the lives of those we influence through quality services in a Christian atmosphere.*

### OUR VISION

*Those served by Tennessee Children's Home will learn to live healthy physical, mental, social, and Christian lives.*

---

## WHAT WE DO

Tennessee Children's Home provides group home residential treatment, child and family counseling, and independent living programs. The purpose of TCH is to support, educate and provide Christian out-of-home care for children who are victims of abuse, dependent neglected, orphaned, and/or exploited, making all reasonable and practical efforts to provide services to meet their intellectual, emotional, physical and spiritual needs. A further purpose is to provide family intervention that is intended to prevent or reverse family disintegration through a series of community based and family based intervention strategies.

With four campuses located across the state, Tennessee Children's Home is able to offer a variety of services to children and their families. These include residential care for children placed by the Department of Children's Services and classified as needing Level II services. TCH also offers Alcohol and Drug programs. The group home residences are family oriented-serving no more than 8 children per house under the guidance of Christian house parents. Each campus offers supervised recreational facilities such as gymnasiums, softball fields, volleyball, exercise and weight-lifting equipment, games rooms, and other activities.

All the children in our care, regardless of the program, receive professional counseling. For some privately placed children, those classified as Level II, TCH offers on-campus and highly structured, therapeutic educational facilities. TCH also provides a minimum 3-month monitoring program to assist children and their families in the transition back into home, school, and work environments.

## OUR PROGRAM

The Level II residential care program is designed for children who may be abused or neglected and who may exhibit runaway or delinquent behavior. They may have problems with their families, local law enforcement, school environments, or with their own personal behavior. The children served are between 13 and 18 years old. The children receive individual and group counseling, assistance with individual problems, and behavior modification instruction designed to help them become responsible adults. They live in group homes designed to be as family integrated as possible.

The Cornerstone School in Spring Hill, Duncan Academy in Knoxville, and New Heights in Pinson are the on-campus schools that provide for the educational needs of children in Level II programs and private placements. Most of these children are academically behind and/or have special learning needs. The school offers a structured and treatment-oriented environment, a 6:1 student-teacher ratio, tutoring, and special education classes. Students take courses in Math, Science, English, Reading, Life Skills, Physical Education, and Bible.

As Tennessee Children's Home works with abused, neglected, wayward, and orphaned children and youth, all reasonable and practical efforts are made to provide services to meet their intellectual, emotional, physical, and spiritual needs. This program has already proven successful as we observe the changes in student's behavior. The children become more self-confident, have less personal behavioral problems and are more productive as members of their community. We are providing the highest quality program promising the overall growth and success of each child in our care. •



# THE FAMILY UNIT

**By Chris Doughtie**

*Director of Development and Community Education*

I could not even begin to tell you how many conversations I have had with people about the breakdown of the family when talking about Tennessee Children's Home. It has been too many!

It doesn't matter if the person grew up with a healthy family nucleus or if they themselves experienced a lack of guidance from one parent or another, or both. The common understanding is this: when children do not experience the proper love, support, care, discipline, nourishment, and guidance; there is the strong possibility that the child will not develop in a way that puts them in the best position for success.

The understanding is clear. A Biblical model of family is ideal. One where the parents are married, committed to one another for the rest of their lives. Additionally, the parents are looking to raise the children together, with a Biblical emphasis which will include the love, support, care, discipline, nourishment, and guidance as mentioned above.

"Children, obey your parents in the Lord, for this is right. Honor your father and mother" (this is the first commandment with a promise), "that it may go well

with you and that you may live long in the land." "Fathers, do not provoke your children to anger, but bring them up in the discipline and instruction of the Lord" (Ephesians 6:1-4).

What is not clear is the Christian response to those who do not experience a proper family nucleus. Often these groups are not included in our community and fellowship groups. There is a struggle because a child may behave differently due to their family situation and therefore, we are not willing to take the time to spend on building a relationship with that single parent, or that child who is being raised by their grandparent. Who knows who you may impact by putting some effort into being a mentor to someone who has not experienced that general Biblical family model?

It's unfortunate that there is a need for a place like Tennessee Children's Home. There will always be situations that we as individuals cannot infiltrate and therefore a more elaborate plan of care will be required. We remain committed to a Biblical model of helping these children and families. This is something that we will not waver from. For us to provide that proper Biblical guidance, we must have consistent support. Thankfully, because of people like you, we can continue this model and serve youth and families in an impactful way.

As always, we encourage our supporters to come and see how their donations are making an incredibly important impact on children. Contact your closest location (see below) to set up a time to come by and visit. If you aren't very close, let us know when you are traveling through, we want to meet you and show you how your support is affecting those we serve in a Biblical way! •

**West Tennessee- Pinson, TN – Todd Johnston – 731-989-7335**

**East Tennessee- Knoxville, TN - Richard Johnston – 865-584-0841**

**Middle Tennessee – Spring Hill, TN - Mike Yugas – 931-486-2274**

**North Central – Clarksville, TN - Roze Ellen Beamer 615-714-7181**



# “Where does my donation go?”

By **Rebecca Mischke**

*Assistant to the Director of Development*

Your donation is so important. You are making a difference in the lives of many children and youth that are at-risk. Sometimes TCH asks for donations for something specific and other times TCH ask for general operations donations. Well, what does that mean and where does your money exactly go? To the right are the answers to your questions. •

## 5 TOP ANSWERS

### 1. Your donation provides services

- a. Counseling
- b. Group Therapy
- c. Education with licensed teachers
- d. Our EQUIP Program
- e. Drug and Alcohol Treatment

### 2. Your gift provides Christian salaries

- a. Residential Counselors (House Parents)
- b. Case Managers
- c. Night Staff
- d. Teachers and Teacher-aides
- e. Maintenance Staff
- f. Office Staff
- g. Development Staff

### 3. Your support provides vehicles and gasoline

- a. Church
- b. Court
- c. Doctor/Dentist visits
- d. Recreational Activities

### 4. Your money provides necessities

- a. Food
- b. Housing
- c. Clothing

### 5. Your support provides spiritual guidance

- a. Bibles
- b. Daily Devotions
- c. We Covet Your Prayers

# EAST TENNESSEE

By **Martin Smith**  
*Development Coordinator – East*

A picture is worth a thousand words, and I hope these pictures describe how very blessed we have been at the East Tennessee campus this year. We start off with **The 4th Annual Pathways 5K**, our fastest growing event. We set a new record raising over \$10K with 188 runners and walkers. We are so thankful for Mortgage Investors Group, our Title Sponsor and West End church of Christ the host of our race. Our race is now certified thanks to C. John Chavis. Without their support none of this would have been possible.



PRESENTS



GIVING  
*Guitars*  
TOUR

WEDNESDAY  
JANUARY  
26  
1:30PM

Tennessee  
Children's Home  
Knoxville, TN



STEVEN CADE



We had our own special car show on campus for Halloween, thanks to Matthew Aragon and **Tennessee Driver's Club**. Thank you for sharing your cars with the boys and a special thanks to Heather Conrater for the Halloween Party afterwards.



Steven Cade made a special appearance at our campus with his **Giving Guitars Tour**. The boys really enjoyed our personal concert and the guitars Steven donated to our campus.

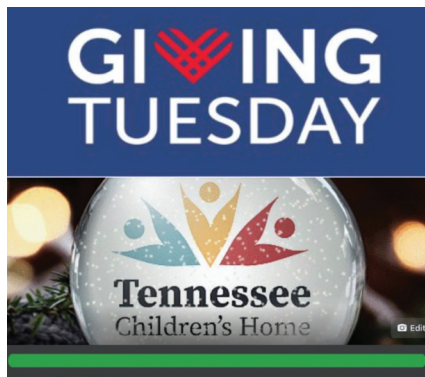
Thank you for supporting East Tennessee. The boys had a great time serving everyone that came out to the **2nd Annual Pancake Breakfast** at Aubrey's.



We were the recipients of **The Fountain City Business & Professional Associations** "May Give". They blessed us with some much needed Shirts, Socks, Boxers and Duffle Bags. Thank you all so much for your Love & Support!



We were awarded a \$1,000 grant from Modern Woodmen of America! Thank you Charlie Pratt, Blake Foote and everyone at Modern Woodmen in Fountain City, Tenn. We appreciate your support!



**The 18th Annual John Chavis Golf Classic** was bigger and better than ever. This year was the first time we've had a morning flight and an afternoon flight! We had 40 teams this year and raised over \$60K. Thank you to all those players and sponsors who made this possible. A special thanks to Coach for taking time out of his USFL season in Birmingham to raise money for the East Tennessee campus.



Our **Food & Coin Drives** were plentiful this year. There are so many churches in East Tennessee that pour out their Love and Support for our boys.



The love continued to flow during the holiday season with our **Giving Tuesday on Facebook**. Thank you to all those who donated!

Of course, none of this would be possible without blessings from above. "Every good gift and every perfect gift is from above" (James 1:17). I give Him the credit for everything, and He continues to rain down more blessings on us every day. "Through Jesus, therefore, let us continually offer to God a sacrifice of praise" (Hebrews 13:15). I hope and pray we all use what God has given us to glorify Him and live every day to further

the Kingdom. "Each of you should use whatever gift you have received to serve others, as faithful stewards of God's grace in its various forms. If anyone speaks, they should do so as one who speaks the very Words of God. If anyone serves, they should do so with the strength God provides, so that in all things God may be praised through Jesus Christ. To Him be the glory and the power for ever and ever. Amen" (1 Peter 4:10-11). •

# FATHERLESS

By Richard Johnston  
Executive Director East Campus



Over the span of 50 years, fatherless households have been on the rise. In 1968, the percentage of households that were only mothers was at 11%, as of 2020, that number is 21%. according to the U.S. Census Bureau. According to Pew Research in 2014 the two-parent families were down to 46%.

Why have we reached this point with the family dynamic? While a portion of the traditional two parent family decline can be attributed to natural causes like the death of a parent, the majority is due to broken families. One of the common occurrences we see from the families we serve are single parent families or grandparents raising the youth. Most of our residents are raised without a father present in the home. According to *Psychology Today*, research has found the following to be true of children with absent fathers: Children have a declined self-concept leading to feeling abandoned when the fathers are not present in their lives. Youth without fathers active in their life have struggles with social adjustment, rise in behavioral problems, and are often unhappy. Youth without fathers present in their life struggle with academics and attending school, often engage in risky behaviors, such as premarital sex with multiple partners, and drug and alcohol dependency. These youth can encounter relationship problems of their own later in life.

So how do we counter patterns of single parent homes in the youth we serve?

Our goal is to provide the youth we serve with an example of a good Christian home. Colossians 3:18-21 says “Wives, submit to your husbands, as is fitting in the Lord. Husbands, love your wives, and do not be harsh with them. Children, obey your parents in everything, for this pleases the Lord. Fathers, do not provoke your children, lest they become discouraged” (ESV, 2016). A strong foundation must be established and not just any foundation will do, it must be a foundation built on God’s Word. James 1:18 tells us God is the giver of every good and perfect gift, since the home is from God, we need to build it the correct way and care for it diligently. The Christian home is cultivated and exemplified by the parents, the father takes the role of spiritual leader (Ephesians 6:4) and the wife plays a pivotal role in raising the children (Acts 16:1).

While we cannot change the structure of the homes our residents come from, we can lay the foundation for them to follow when they are adults. Here in Knoxville at the East campus we have dedicated staff that teach everyday through their example of what a Christian home should resemble. Recently, I had a former resident inform me that he was going to be a father. He grew up without his father present much of his life and stated how important it was that he be present and engaged in his child’s life, all which he credits learning while he was a resident with us. Our goal for each young man that comes through our doors is that they will help change the cycle of fatherless children by being present in their future children’s lives. It is even more important that we teach them to not only be present but to build a good Christian home as they become adults. •



# INDEPENDENT LIVING AND DISPLACED FAMILIES PROGRAM

By **Roze Ellen Beamer**

*Program Director at North Central*

*What if you are a single parent with two children, one child is in a wheelchair, and you are having to sleep at various places every night due to not having a home?*

**WHAT IF YOU WERE A YOUNG ADULT WHO IS WORKING BUT CANNOT AFFORD A PLACE TO RENT?**

**What if your house burned down and you lost your belongings?**

**What if you lost everything in the Waverly flood and are living out of your car on these sweltering summer days?**

What if your property owner gave you 10 days to move out of your apartment and you have a family of five?

**WHAT IF YOU WERE A SINGLE PARENT IN AN ABUSIVE RELATIONSHIP AND HAVE NO PLACE TO GO?**

These are some of the situations people are experiencing and they need help.

If you are a young adult between the ages of 18-21 and aged out of foster care and DCS custody, *Tennessee Children's Home Independent Living Program* can help. The Independent Living program gives young adults an opportunity to have housing, work towards getting an education, have a job, and save money along with being given daily guidance on how to make the best decisions on things about their future. The Independent Living program at the North Central campus in Clarksville gives young adults an opportunity to be successful.

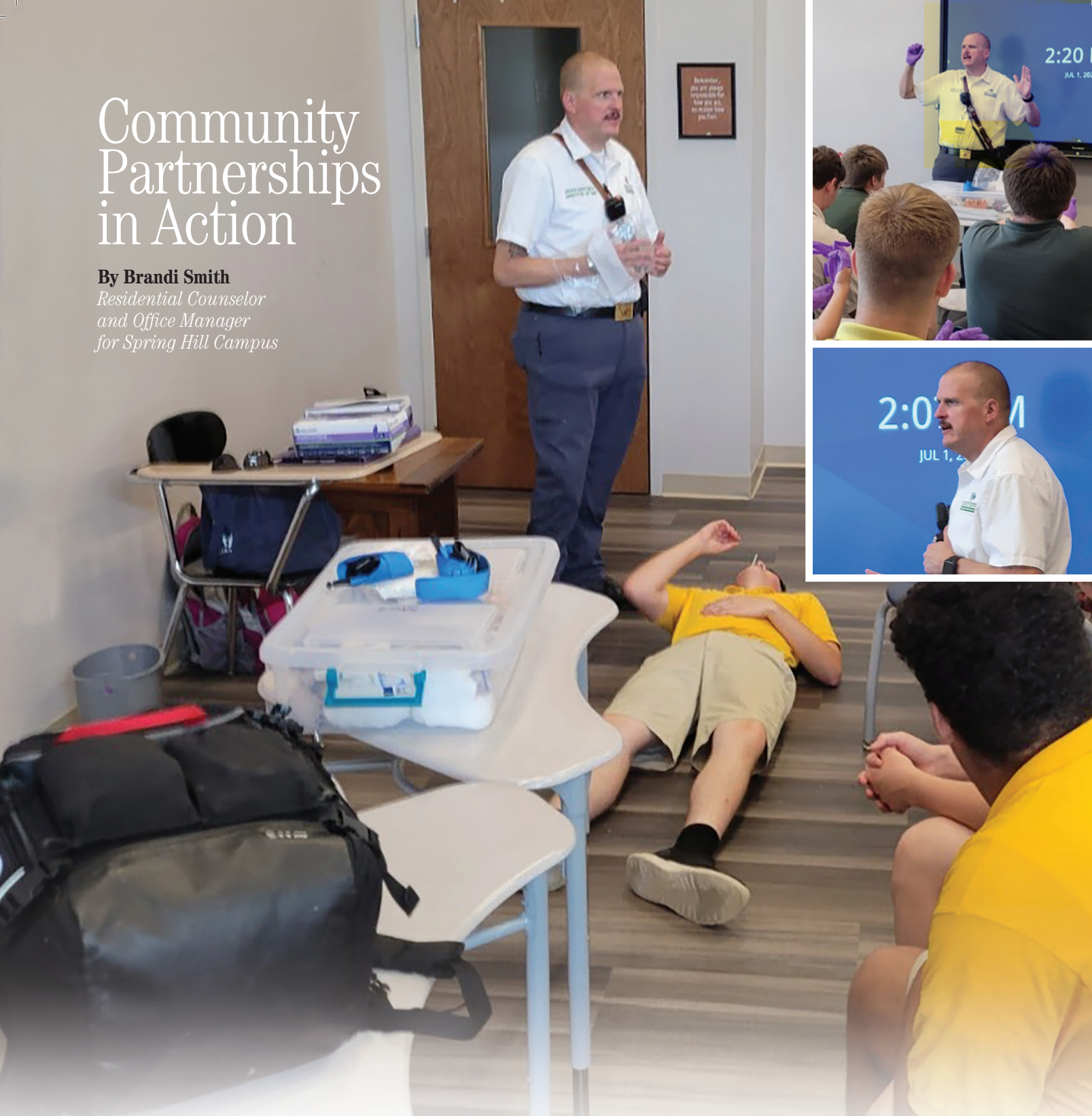
There has been more interest in the Displaced Families Program since gas prices and the cost-of-living has increased.

At this time, we have twenty-one individuals being served on the North Central Campus. There are twelve adults and nine children receiving services. This program is a wonderful opportunity for individuals and families to get back on their feet. With the Displaced Families Program, they can save money to help with deposits for apartments. They generally find a more permanent place to live within six months to a year.

The individuals in both programs have access to the food pantry, donated items, and services in the community. There is a bus stop close to the apartments to help with transportation needs, along with grocery stores, doctor offices and job opportunities within walking distance for those wanting to work close to home. Weekly devotionals are held for those wanting to take part and individuals are invited to attend a local church of Christ. These programs are wonderful opportunities for individuals and with the help of Tennessee Children's Home, they can have a better chance at succeeding in the future. •

# Community Partnerships in Action

**By Brandi Smith**  
*Residential Counselor  
and Office Manager  
for Spring Hill Campus*



**Goodwill Career Solutions** has partnered with many agencies in the community, but what a success it is when you can connect two together! Career Coach Amanda provides training to the young men at the TCH/Spring Hill about daily life skills related to work and adulthood. Past sessions have been: Interviewing for work, financial literacy, soft skills preparation for work and more. When the children's home was looking for some first-aid education, Amanda reached out to the Director of Maury County EMS, Brian Hupp. Mr. Hupp (a 20+ year paramedic) jumped at the opportunity to give back to the citizens of Maury County and taught a very fun and interesting session on basic knowledge first aid.

The young men enjoyed learning about things like how to take off gloves safely, what to do if you find someone unconscious and many other first aid best practices. Amanda was able to be there and the young men were excited to have them return with more topics! •

# GOD'S PLAN

## Finding the Missing Piece at Pinson

Change is uncomfortable, difficult, and unwanted most of the time. We have all encountered enough change over the last few years. However, while change is tough it is often necessary. Fortunately, we serve a Father above who has never and will never change. He was the same yesterday, as He is today, and will be tomorrow. He is true to His Word, and faithful to fulfill all He has said.

Unfortunately, there is a large population of people, especially youth, who have never heard of our Heavenly Father. In fact, many of the young people we serve don't know love from their earthly fathers, which is sad. It is no secret that there is a growing population of young people who grow up in fatherless homes. The Bible speaks about the importance of the father in the home (Ephesians 6:1-4 and Colossians 3:20-21). When there is no father, there is a missing piece to God's perfect plan for the family. You may have even read studies about how a fatherless home impacts the development of young men. Tennessee Children's Home seeks to combat these issues by showing the young people in our care a loving Father above who gives generously, faithfully, and never leaves. While we cannot give these boys a father, we can provide father-figures, mentors, and good examples from our staff to show them the love of God.

Here at the West campus, we have undergone many changes over the last year. We have added new staff members, grown our resident population, and restarted our renovation capital campaign, "Maintaining Hope"! Since January 1st, we have added eleven new staff members who are eager to show God's love and help impact the lives of our residents. We have served 27 residents and counting since the beginning of 2022. We also continue to sustain a full campus as we strive to serve as many youth and families as possible. We have restarted our "Maintaining Hope" campaign which is dedicated to renovating one of our residential houses, the school, and the office. To date, we have completed the office renovations, painted the school, and are in the process of having the house fully renovated which will give us the ability to serve 8 more residents on our campus!

Finally, the greatest news is that 7 of our residents have decided to put on Christ in baptism! Our entire campus is requesting Bible studies every day and our staff are actively involved in providing them with every opportunity to know the love of God and the love of His people. This all is in an effort to break a cycle that plagues our world.

While the changes have not always been easy, they have been necessary and very positive to advance the work we do at the West campus and to advance the kingdom and cause of Jesus Christ.

You may be wondering what you can do to help. There is always plenty to do, and we are so thankful for any help you are willing to give. First and foremost, we

**By Todd Johnston**  
*Executive Director*  
*West Tennessee*

believe in the power of prayer and are so grateful for your prayers for the work going on here. Pray for our residents and their families. Pray for our staff as they serve tirelessly. Pray for our campus as we track and adjust. Pray that we receive the necessary staff to continue serving youth and families. Pray that we continue to receive residents to serve in the fashion that we do. Secondly, you can help by sending people our way who are interested in serving with us. We are always looking for good people to come work with and for us. Finally, you can help us through donations. Obviously, these renovations and positive additions are not cheap. So, any little bit that you or your congregation can give is helpful, useful, and received with thankfulness!

We are so thankful to God for allowing us to do this work, and we are thankful to you for helping us in our journey to combat the battles many face in this world. Help the youth to be the change that God desires them to be! •

# YOUR COMMITMENT WILL MAKE OUR TEAM STRONGER!

Tennessee Children's Home has been in existence since 1909, when it was originally a home for orphaned children. We transitioned in the 1980's to serve 'at risk' youth. Youth in need of adult guidance, support, and encouragement. We not only serve the youth, but we also serve their families. We have an 88% success rate, and we need your help to continue this success.

Become a part of this vital ministry! Tennessee Children's Home offers competitive pay and excellent full-time benefits including medical, dental, vision, life insurance, disability, retirement, and paid-time off.

## WE ARE CURRENTLY SEEKING INDIVIDUALS TO FILL THE FOLLOWING JOB OPENINGS:

### CAMPAIGN COORDINATOR (HENDERSON)

Tennessee Children's Home is looking for a full-time Campaign Coordinator at our TCH-West campus in Henderson. Applicants must have a bachelor's degree in public relations, marketing, or related field. Campaign coordinator is responsible for developing and maintaining relationships with supporters among other fundraising tasks. Interested applicants can fill out and return applications as directed above.

### IN HOME CASE MANAGER (SPRING HILL, KNOXVILLE)

The In-Home Services Case Manager works closely with all TCH staff in keeping with a team approach to meeting the needs of discharged residents and their families. This position will manage all aspects of treatment of assigned clients through face-to-face support, counseling, and coordination with families.

### NIGHT STAFF (SPRING HILL, KNOXVILLE & HENDERSON)

Each of our Level 2 residential care campuses are seeking at least one full-time and one part-time night staff to supervise youth during sleep hours of 10:00 PM-6:00 AM. High School diploma or GED equivalent required, at least 21 years of age, prefer someone with experience working with youth.

### RESIDENTIAL COUNSELORS (HENDERSON)

TCH-West campus in Henderson is seeking a full-time Residential Counselor Couple (formerly houseparents) to be responsible for the day-to-day care, guidance, and training of the youth assigned to residence, all in keeping with the program policies and procedures. Must have a minimum of a high school diploma or GED, advanced education preferred and one-year experience working with children and youth.

### TEACHER (SPRING HILL)

TCH - Middle TN campus in Spring Hill is seeking two (2) full-time teachers for the on-site school. Teachers work closely with all TCH staff in keeping with a team approach to meet the needs of students. They will plan, organize and implement an appropriate instructional program in a learning environment that guides and encourages students to develop and fulfill their academic potential. Must hold a Bachelors' degree or higher from an accredited institution

Come be a part of this ministry! We offer competitive pay and excellent full-time benefits including medical, dental, life insurance, disability, retirement, and paid time-off. To apply, visit us online or contact our HR Manager at 931-486-2274 x225. We offer competitive salaries based on experience and skill, and training and professional development opportunities. Corporate Office/HR Dept., P.O. Box 10, Spring Hill, TN 37174 Phone: 931-486-2274 ext. 225

#### EQUAL OPPORTUNITY EMPLOYER

To provide equal employment opportunity and treatment regardless of race, color, sex, age (40 and over), national origin, disability, or citizenship, except in cases in which affirmative action is required for Vietnam era veterans or other legally protected persons. However, as allowed for by certain exception provided by the Civil Rights Act of 1964, it reserves the right to preferentially employ individuals who espouse the same principles of moral, ethical, and spiritual conduct as the primary support body for this agency.

#### CONFIDENTIALITY

It is the policy of TCH that the internal affairs of this organization, particularly confidential information regarding a child's life circumstances, shall be maintained in the strictest confidence. Information designated as confidential shall be discussed with no one outside this organization and only discussed within this organization on a "need to know" basis. Discussion of case material among professional staff shall be appropriate, so long as it is used as a means of planning and intervening in the best interest of the child. Employees shall have a responsibility to avoid unnecessary disclosure of non-confidential internal information about this organization, its clients (children), financial data, etc. This responsibility shall not be intended to impede normal communications and relationships among employees but shall be intended to alert employees to their obligation to use discretion to safeguard internal affairs. Employees, at the time of employment, shall sign a statement that reflects their understanding of the necessity for confidentiality. Supervisors may specify certain types of information as confidential, depending on the circumstances. Employees shall be prohibited from attempting to obtain confidential information for which they have not received access authorization. Employees violating this policy will be subject to discipline, up to and including termination. All media inquiries shall be directed to the President. Inquiries seeking information concerning current or former employees shall be referred to the President, Human Resource Manager or Director of Finance, depending on the circumstances.



Sharing Faith, Hope, and Love since 1909

To learn more about Tennessee Children's Home visit [www.tennesseechildrenshome.org](http://www.tennesseechildrenshome.org)  
Tennessee Children's Home is a non-profit 501(c)3 organization.

**By Jay and Brandi Smith**

*Spring Hill Residential Counselors*

# THE REALITY

We often get asked why we do what we do. The simple answer is, "To return the love, patience, and instruction that was shown to our son 70 x 7-fold." We are fully committed to what we consider the mission field, here in middle Tennessee. We work full-time for The Tennessee Children's Home (TCH) as Residential Counselors. Jay also works at the on-site school Cornerstone as a teacher's aide, and I work in the office as an administrative assistant for the Spring Hill campus.

In 2015, we spent months of dealing with our son's addiction, self-harm, and just overall poor choices. We had done all we knew how to do, and we could see the direction our son was headed. It was terrifying. After many nights staying awake, praying and worrying, we had hit rock bottom.

God had already put His plan in place, long before we knew of the struggles we were going to fight. We had become good friends with, Mike Yuhas, the Spring Hill Campus Director at TCH. We had recently started attending the same congregation he attended. We began learning about TCH and the programs. We had begun leaning on Mike and using him as a soundboard. We took much of his advice to help steer our son back to us.

On October 29, 2015, we turned our son over to the Christian staff at TCH. We turned to a group of mostly strangers to fix, what we had been struggling with so long. We were still unsure of what exactly would happen over the next few months. We were unsure of the specifics of the programs at TCH and how or if they would work. But for the first time in a long time, we had peace of mind. We knew our son was safe and despite the emptiness deep inside our hearts, at that moment, we were ok.

Through his 8-month stay, our son changed. The self-centered teen with a low-self-image struggling with a drug problem, became a young man that was open, respectful, and determined with a new focus. The program worked!

May 19, 2016, we brought our son home. Don't get me wrong, life was not perfect. There were still bumps in the road, but there was happiness and a new level of self-esteem and commitment.

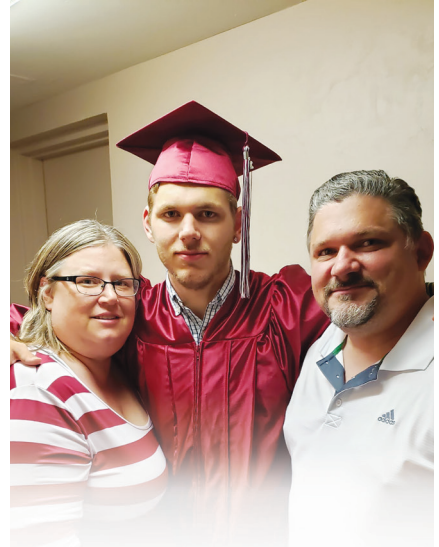
His life was forever changed.

He is married and has a son on the way. He is the reason we do what we do here. He even volunteers his time to talk with the residents and play sports or other games with them. He is giving back. We are so blessed.

When we were considering the Residential Counselors (house parents) position opening, we immediately said no. We had too many material things in the way. We had excellent high paying jobs, a nice home, a son in high school still. We just didn't want to consider this was the right time. Then slowly, things that we were putting importance in, started becoming not so important. God began showing us where he wanted us, and in 2018 we decided to put our faith and trust in Him, and we became Residential Counselors.

Since 2018, we have had over 80 residents (boys ages 13-18) go through TCH's program. The majority completed the program. We keep in contact with many of them today. There has been nothing more rewarding than get a call or a text after they leave. They share their successes and their failures. They still want advice, want to visit, and want to maintain that bond that was started when they were at their rock bottom.

We know we made the right decision



when we hear affirmations like, "Mrs. Boo, I made it. I am now a marine" or text Mr. Jay to ask him to get on-line to play a game.

We edify every resident, who comes through our house that he matters, and that God loves him. God made these young men in His image and therefore they are special. We teach every resident to love himself. We help them begin healing, restore and rebuild their life, and how to be saved according to the Word of God. Isn't that what life is really about, sharing Him?

Friends, there is a need. There is a need at our facility. We need good, Christian men and women to put their material blessings aside and give themselves to the mission field right here in your own backyard. Mission work is truly the most rewarding work you can do.

We have a need to turn our nation back to God. It is something for which we are all responsible. When working at a home such as Tennessee Children's Home, you are taking these teenage at-risk boys and giving them the opportunity to receive counseling, schooling, spiritual guidance, and a structured home environment. We demonstrate what a home looks like, and how God instructs a household to be. They are taught teamwork and social skills that will benefit them in their future. We share with them the Good News about God, and His love for them. Some make the decision to put on Christ while they are in the program. What better way to turn a nation back to God, than to teach the young about Jesus?

Please, consider where you are in your life. Consider where you are in your faith. We are in need of Christian employees. Consider joining our staff. Please visit us at [www.tennesseechildrenshome.org](http://www.tennesseechildrenshome.org) for more information. •

# WishList

## YOU CAN HELP TENNESSEE CHILDREN'S HOME!

Click and shop for our Wishlist items and ship them directly to us. Make an even bigger impact by shopping through [www.smile.amazon.com](http://www.smile.amazon.com).

### What is AmazonSmile?

AmazonSmile is a simple and automatic way for you to support your favorite charitable organization every time you shop, at no cost to you. When you shop at [smile.amazon.com](http://smile.amazon.com), you'll find the exact same low prices, vast selection and convenient shopping experience as Amazon.com, with the added bonus that Amazon will donate a portion of the purchase price to your favorite charitable organization.

### How do I shop at AmazonSmile?

To shop at AmazonSmile simply go to [smile.amazon.com](http://smile.amazon.com) from the web browser on your computer or mobile device using the links below. You may also want to add a bookmark to [smile.amazon.com](http://smile.amazon.com) to make it even easier to return and start your shopping at AmazonSmile.



Spring Hill [https://smile.amazon.com/hz/wishlist/ls/20KM23G10TJH8?ref\\_=wl\\_fv\\_le](https://smile.amazon.com/hz/wishlist/ls/20KM23G10TJH8?ref_=wl_fv_le)

West TN [https://smile.amazon.com/hz/wishlist/ls/2VEFLFIZ4LGOA?ref\\_=wl\\_fv\\_le](https://smile.amazon.com/hz/wishlist/ls/2VEFLFIZ4LGOA?ref_=wl_fv_le)

East TN [https://smile.amazon.com/hz/wishlist/ls/1VX929K9PSV1G?ref\\_=wl\\_fv\\_le](https://smile.amazon.com/hz/wishlist/ls/1VX929K9PSV1G?ref_=wl_fv_le)

North Central [https://smile.amazon.com/hz/wishlist/ls/3BOFIUJ7V6YZD?ref\\_=wl\\_fv\\_le](https://smile.amazon.com/hz/wishlist/ls/3BOFIUJ7V6YZD?ref_=wl_fv_le)

## SPRING HILL

### Brandon and Brandi McKay House

- X-Large Pots, Pans, and Skillets
- Large Griddle
- Vacuum Cleaner

### James and Penny McCune House

- Large Griddle
- 8-quart Pressure Cooker
- Vacuum

### Doug and Rose McKay House

- 8 – Curtain Tension Rods for 34 1/4" Windows
- 8 – Black Curtains (2 Panel) 34"x 70"
- 8 – Large Super Soaker Water Guns



### Bob and Lorraine Adams House

- Iced Tea Maker
- Flatware for 10 People
- Large Crock Pot

### Jay and Brandi Smith House

- Iced Tea Maker
- Ice Cream Maker
- Series Book (age appropriate) 5th-6th Grade for Boys

### Malvina McCathern House

- 55" TV
- Large Crock Pot
- Electric Can Opener

Tennessee Children's Home is a non-profit 501(c)3 organization. [www.tennesseechildrenshome.org](http://www.tennesseechildrenshome.org)

## NORTH CENTRAL

### Independent Living Home

- Heavy-Duty Pots and Pans
- Any Bakeware
- Curtains and Rods

## EAST TENNESSEE

### House 8564

- 8 – Laundry Baskets
- Small Bookshelf (5" D X 12.75" W X 54.1" H)
- Plastic Mixing Bowl Set

### House 8568

- Electric Can Opener
- Large Cutting Board
- Vacuum

### House 8566

- Electric Can Opener
- Knife Set w/scissors
- 8 – Large Nylon Laundry Baskets that Collapse

### Harold Duncan School

- Large Electric Griddle
- Lots of Containers with Lids

## WEST TENNESSEE

### 105 House

- X-Large Crock Pot
- Basketball Goal/ Basketball and Footballs
- Potholders, Kitchen Wash Cloths, and Dish Towels

### 440 House

- Roku or Streaming Device
- Large Griddle
- Basketballs, Baseballs, Baseball Mitts, Baseball Bats, Footballs, Soccer Balls, etc. . . .

### 185 House

- Roku or Streaming Device
- X-Large Air Fryer
- Basketballs, Baseballs, Baseball Mitts, Baseball Bats, Footballs, Soccer Balls, etc. . . .

### 155 House

- Flatware for 10 People
- X-Large Griddle
- X-Large Pots, Pans, and Skillets

# Tributes

As an expression of sympathy or celebration, memorial/honor contributions may be made to **Tennessee Children's Home** in lieu of flowers or gifts. Flowers fade, but a donation to Tennessee Children's Home lives on.

*Please consider us as your charity of choice.*

*(The names in **bold** have been memorialized by the generous contributions of those listed below them.)*

## IN HONOR OF

<b>MR. AND MRS. JEFF ADCOCK</b> Mr. and Mrs. John C. Barnes	<b>MS. SHERRY FORONDA</b> Ms. Lisa Harper	<b>MS. CATHERINE MCCLENNEY</b> Mr. and Mrs. Marvin L Whitworth	<b>MR. L. RANDALL SANDERS</b> Mrs. Libby Sanders
<b>MR. AND MRS. BOYCE ARNETT</b> Mr. and Mrs. William Benson Vance	<b>MR. and MRS. JOE FOWLKES</b> Mrs. Virginia G. Cole	<b>MS. MARIAN OVERSTREET MCKAY</b> Mr. Rocky L. Thurman	<b>MS. JUDITH E. SHOCKLEY</b> Mr. and Mrs. J. T. Whitehead
<b>MR. AND MRS. FRANKLIN R. BELL</b> Van Dyke Church of Christ	<b>MR. BILLY FREEZE</b> Ms. Barbara Watson	<b>MR. AND MRS. KELLY MILAM</b> Mr. and Mrs. Marvin L Whitworth	<b>MR. GENE SKELLEY</b> Mr. and Mrs. William K. Plunk Ms. Kathleen Stutts
<b>MR. AND MRS. FRANK BOBO</b> Mr. and Mrs. Marvin L Whitworth	<b>MRS. FAYE GAINES BELL</b> Mrs. Virginia G. Cole	<b>MR. AND MRS. WINSTON M. MOORE</b> Ms. Carol Ann Moore	<b>MR. JASON SMITH</b> Ms. Betty Cate
<b>MR. AND MRS. NICK BOTZ</b> Ms. Donna Prince	<b>MR. AND MRS. SCOTTY GILBERT</b> Mrs. Betty Cannon	<b>MS. JAUNICE MORGAN</b> Ms. Donna Prince	<b>MR. AND MRS. FLETCHER SRYGLEY</b> Mr. and Mrs. John C. Barnes Ms. Sue Bonner
<b>MR. AND MRS. CARL W. BRASIER</b> Mr. and Mrs. Marvin L Whitworth	<b>MR. AND MRS. TIMOTHY GORDON</b> Ms. Beverly Gordon	<b>MR. AND MRS. LARRY NANNEY</b> Mrs. Betty Cannon	<b>MR. and MRS. MICHAEL TOMSHACK</b> Jack and Charlotte Frost Family Foundation
<b>MR. STEVE BROTHERS</b> Mr. and Mrs. Marvin L Whitworth	<b>MS. MARY FRANCES HANCOCK</b> Mr. Robert B. Sweeney	<b>MR. AND MRS. DEAN NORTHCUTT</b> Mr. and Mrs. Marvin L Whitworth	<b>DR. AND MRS. THOMAS E. TOWNSEND</b> Townsend and Coleman Staff
<b>MR. AND MRS. CURTIS W. BROWN</b> Dr. and Mrs. Fred Rolater	<b>MR. LARRY HOLLIE</b> Ms. Jacque Jackson	<b>MR. JEREMY NORTHPROP</b> Dr. and Mrs. Donald P. Wright	<b>MR. AND MRS. ED VADNEY</b> Ms. Donna Prince
<b>MR. AND MRS. ERIC E. BROWN</b> Mr. Andrew Carpenter	<b>MR. ROBERT P. HOLT</b> Mrs. Pamela D. Hicks	<b>MRS. DOROTHY NOVODOFF</b> Mr. and Mrs. Marvin L Whitworth	<b>MR. T. J. WAKEFIELD</b> New Union Church of Christ
<b>MS. LINDA BRYANT</b> Ms. Donna Prince	<b>MR. AND MRS. DAVID HOUSCH</b> Mr. and Mrs. Marvin L Whitworth	<b>MS. ALEXA PRINCE</b> Ms. Donna Prince	<b>MS. DIANA WALKER</b> Mr. and Mrs. James E. Crockett
<b>MR. AND MRS. ROY BUSH</b> Mrs. Velma Davis	<b>MR. AND MRS. SARA IVEY</b> Mr. and Mrs. Marvin L Whitworth	<b>MR. AMOS PRINCE</b> Ms. Donna Prince	<b>MS. ALICE WHEATLEY</b> Mrs. Jenny Young
<b>MR. AND MRS. HERBERT BYRD III</b> Sweetwater Church of Christ	<b>MS. MARJORIE JACKSON</b> Mr. and Mrs. Danny G. Paschall Mr. and Mrs. Peter Reimold	<b>MR. AUSTIN PRINCE</b> Ms. Donna Prince	<b>MR. AND MRS. WHITEHEAD</b> Mr. and Mrs. Jerry L. Whitehead
<b>DR. AND MRS. JOSHUA COLEMAN</b> Townsend and Coleman Staff	<b>MR. AND MRS. DAVID JENT</b> Ms. Laura Lea Jent	<b>MS. LOUELLA M. PYLE</b> Mrs. Frances B. Davison	<b>MR. AND MRS. GABE WILSON</b> Mrs. Betty Cannon
<b>MRS. VIRGINIA COLLINS</b> Mr. and Mrs. Manious Chandler East Wood Church of Christ	<b>JESUS</b> Mr. and Mrs. David A. Loyd	<b>MRS. MARY LEE RICHARDS</b> Mr. Gary Richards	<b>DR. AND MRS. DONALD P. WRIGHT</b> Mr. and Mrs. George Ellis
<b>MR. AND MRS. LEON T. COUCH</b> Mrs. Lisa P. Couch	<b>MR. AND MRS. DAVID KING</b> Mr. and Mrs. Marvin L Whitworth	<b>MR. MARILYN RILEY</b> Ms. Kelly Belcher Ms. Mary Littrell Mr. and Mrs. Kenneth M. Moore	<b>MEMORIAL</b>
<b>MR. LARRY CROCKETT</b> Mr. and Mrs. James E. Crockett	<b>MRS. ROSEMARY MADDOX</b> Ms. Monica Maddox	<b>MR. AND MRS. JAMES G. ROBERTS</b> Mrs. Betty Cannon	<b>MRS. WILMA ABBOTT</b> Cedar Lane Church of Christ
<b>MS. JANICE CURD</b> Mr. and Mrs. Lewis Curd	<b>MAIN STREET CHURCH OF CHRIST</b> Mr. Ricky H. Clay	<b>MRS. JUNE ROLAND</b> Mr. and Mrs. David and Ingrid Roland	<b>MS. LORRIE A. ACUFF</b> St. Elmo Church of Christ
<b>MR. AND MRS. ROSS DEMPSTER</b> Mrs. Betty Cannon	<b>MR. AND MRS. ED MAYBERRY</b> Mr. and Mrs. Marvin L Whitworth	<b>MS. DORIS T. RUTLEDGE</b> Mr. and Mrs. James W. Costello	<b>MRS. INEZ ADAMS</b> Mr. George F. Adams
<b>MR. AND MRS. TERRY FINCH</b> Mrs. Betty Cannon	<b>MR. AND MRS. JOEL MCCALL</b> Ms. Sylvia J. Harris	<b>MR. AND MRS. JOHNNY SAMS</b> Mrs. Betty Cannon	<b>MR. BOBBY JACK AGEE</b> Ms. Sherry Earnheart

**MRS. MARGIE ALBRIGHT**  
Mrs. Virginia Wright

**MS. RUTH ALFORD**  
Mr. and Mrs. Marvin L Whitworth

**MRS. SANDRA ALLEN**  
Mrs. Libby Sanders

**MR. JAMES ALSUP**  
Mr. and Mrs. Joe Fowlkes

**MR. AND MRS. W. C. ARNOLD**  
Mr. and Mrs. Michael A. Jones

**MS. DEBBIE ASTON**  
Ms. Judy Cofer

**MRS. BETTY JEAN BAKER**  
Mr. and Mrs. Steven K. Gilbert

**MR. C. S. BAKER**  
Mr. Gary T. Baker

**MR. HAROLD "WADE" BATES**  
Mr. and Mrs. Michael W. Bates

**MR. WILLIAM CLINTON BATES JR.**  
Mr. and Mrs. Philip W. Bolander  
Mr. and Mrs. Fred Tate  
Randy Whitehead

**MR. AND MRS. J.W. BEARDSLEE**  
Mrs. Libby Sanders

**MS. IMOGENE BECK**  
Ms. Sherry P. Ketterer, Jr.

**MR. AL BEHEL**  
Ms. Elaine Ely

**MR. R.L. BEHEL**  
Ms. Nelta Jo Hicks

**MR. LEROY BERNARD**  
Mr. and Mrs. Robert M. Simpson

**MR. GEORGE BOLTON BESS**  
Ms. Diane Caldwell

**MRS. IRENE BILLS**  
Ms. Juanita R Bills

**MR. ROBERT BLALOCK**  
Mrs. Virginia Wright

**MRS. DONNA BLYTHE**  
Mr. and Mrs. Thomas H. Holland

**MR. DAVID BOEHMS**  
Mrs. Faye Boehms

**MR. KENNETH BOEHMS**  
Mrs. Faye Boehms

**MRS. LAVERNE BOONE**  
Mr. and Mrs. Barry Eskew  
Ms. Melody Ligon

**MR. AND MRS. CHARLES BOULDIN**  
Dr. C. Larry Bouldin

**MR. DEAN BRASWELL**  
Mr. and Mrs. Timothy S. Gilbert

**MR. BITSY BREWER**  
Mrs. Betty Cannon

**MR. DON BRIDGES**  
Mr. and Mrs. Bret Hartle

**MRS. COLETTA BROWN**  
Mrs. Margaret Lovingood

**MR. ROBERT BROWN**  
Mr. and Mrs. Robert M. Simpson

**MR. PETER F. BUCHANAN**  
Mr. and Mrs. Larry Norris

**MS. OLETA BULLARD**  
Ms. Sandra Reed

**MR. DENNIS BURCHFIELD**  
Ms. Diane Starnes

**MR. JERRY BURSE**  
Spring Hill Church of Christ

**MRS. LAVERNE "TITTLE HENNY" CAMPBELL**  
Ms. Kay Raskopf

**MRS. JUDY CAPPS**  
New Union Church of Christ

**MR. WILLARD CARR**  
Mrs. Virginia G. Cole  
Mr. and Mrs. Joe Fowlkes

**MS. JULIA KAY CASON**  
Ms. Carolyn J. Cason

**MS. FRANIS CHAMBERLEN**  
Mr. Eddie Brown

**MR. KEVIN MORRIS CHILDRESS**  
Mr. and Mrs. Mark A. Wilson  
Mr. and Mrs. Michael E. Wilson  
Ms. Myrtie L. Wilson

**MR. C. OAKLEY CHRISTIAN, JR.**  
Mrs. Cecil O. Christian, Jr.

**MR. JOHN COLEMAN III**  
Mr. and Mrs. David A. Loyd

**MR. DONALD RAY CONNELL**  
Mrs. Betty Cannon

**MRS. MARY COOKE**  
Ms. Paula C. McCord

**MR. KERRY COUCH**  
Mr. and Mrs. Leon T. Couch  
Mrs. Lisa P. Couch

**MS. KYREE CROSS**  
Mr. and Mrs. David A. Loyd

**MR. SAM DANIEL**  
Mr. and Mrs. Samuel Daniel  
Ms. Sylvia L. Daniel

**MRS. BETTY DANIELS**  
Ms. Lucy Mashburn

**MS. MARGARET DAVIDSON**  
Mr. and Mrs. Marvin L Whitworth

**MR. AND MRS. CHARLES F. DAVIS**  
Mr. and Mrs. James B. Alsop

**MR. DORRIS DAVIS**  
Ms. Jane T. Burke

**MRS. FRANCES B. DAVISON**  
Mr. and Mrs. Raymond P. Banks  
Mr. and Mrs. Robert Bryson  
Mr. and Mrs. David L. Calvin

Mr. and Mrs. Robert F. Carter  
Cedar Lane Church of Christ

Mr. and Mrs. John A. Depper  
Mr. and Mrs. Raymond Eaves, Jr.  
Ms. Lisa Fitzgerald  
Ms. Donna Frazier  
Mr. and Mrs. Steven K. Gilbert  
Mr. Andrew Hall  
Mr. and Mrs. Lloyd Hall  
Mr. Steve Hall  
Mr. and Mrs. Andy Hazelwood  
Ms. Kimberly Hulvey  
Ms. Patricia Jacobs  
Ms. Joy Perkins Johnson  
Mr. and Mrs. Williams R. Macon  
Mr. and Mrs. Russell L. Mitchell, Jr.

**MOORE COUNTY SENIOR CITIZENS**  
Dr. and Mrs. John E. Petty  
Ms. Emily Pruitt  
Ms. Betty Reese  
Ms. Rayma Reese  
Mr. and Mrs. Lawrence C. Robertson  
Ms. Melissa Thomason  
Ms. Natelle Waugh

**MR. AND MRS. THURMAN H. DAY**  
Mr. and Mrs. Thurman H. Day

**MS. EDITH W. DELK**  
Mr. and Mrs. Franklin R. Bell

**MR. DON DENTON**  
Mr. and Mrs. Ralph T. Upton

**MRS. LISA DIXON**  
Ms. Bonnie Garner

**MR. VERNON DODSON**  
Ms. Teresa Winters

**MRS. CECIL B. DOOLEY**  
Ms. Kathy Dooley

**MR. BILLY DURHAM**  
Mr. and Mrs. Bill J. Belew

**MR. BILLY DURM**  
Mrs. Frances B. Davison  
Mr. and Mrs. Phillip F. Gatto

**MR. LEON "SHORTY" EAKES**  
Corders Cross Roads  
Church of Christ  
Mr. and Mrs. Stanley W. Jean

**MS. LINDA EDWARDS**  
Ms. Jacqueline G. Hibbett

**MR. AND MRS. RALPH ELLIS**  
Mr. and Mrs. Stephen Burkhart

**MS. SHIRLEY EMBRY**  
Mr. and Mrs. Robert F. Carter

**MR. CHARLES ENOCH**  
Mr. Max W. Henry

**MR. JUSTIN ESSARY**  
Atwood Church of Christ

**MR. DOUG EVANS**  
Anonymous Individual

**MR. BERTSEL EVERSON**  
Mr. and Mrs. James W. Costello

**JUDGE GERALD EWELL**  
Mr. and Mrs. Steven K. Gilbert

**MRS. LINDA FARMER**  
Ms. Virginia Farmer

**MR. AND MRS. IKE FARRAR**  
Mr. and Mrs. Marvin L Whitworth

**MR. TIM FITCH**  
Ms. Donna Prince

**MS. ANGELA FLEMING**  
Ms. Stella H. Bishop

**MRS. DIANNE FLETCHER**  
Mr. and Mrs. Robert F. Carter

**MR. JOSH FORSYTHE**  
Ms. Sherry Earnheart

**MR. BILLY FREEZE**  
Ms. Diane Parker

**MS. WISTA FULLERTON**  
Mr. and Mrs. David Jent

**MR. RONNIE GAULT**  
New Union Church of Christ

**MR. REED GILBERT**  
Tullahoma Lodge #262

**MS. SHERILL GLADNEY**  
Mr. and Mrs. Bruce Wallace

**MS. KIM GLEASON CAGLE**  
Mr. and Mrs. Timothy  
James Egerton

**MR. AND MRS. MIKE GLIDEWELL**  
Ms. Sherry Earnheart

**MS. FAYE GOLDEN**  
Corders Cross Roads  
Church of Christ

**MR. ALLEN GOODRICH**  
Mr. and Mrs. David Jent

**MRS. BEVERLY GRAVE**  
Mr. and Mrs. David A. Loyd

**MR. ROOSEVELT GREEN JR.**  
Ms. Donna Prince

**MRS. MARY GRISWOLD MOSS**  
Ms. Carol Gilliam

**MR. JUSTIN GURGEL**  
Ms. Donna Prince

**MR. ALLEN HAISLIP**  
Mr. and Mrs. David Jent

**MR. RONNIE LEE HALL**  
Mr. and Mrs. Steven K. Gilbert

**MRS. ANNE HAMPTON**  
Mrs. Donna Warren

**MR. TOMMY HANCOCK**  
Mr. and Mrs. R. H. Jackson  
Miss Sarah L. Jones  
Ms. Betty Reese

**MS. ELIZABETH HARDISON**  
Mr. and Mrs. Jason Fuller



Mr. and Mrs. David Jent  
Marie and Mark McAnally  
Mr. Howard Rosser

**MR. WAYNE HARDISON**  
Mr. and Mrs. Samuel Daniel  
Spring Hill Church of Christ

**MISS ROBIN HARRELL**  
Mr. and Mrs. Frank Shepherd

**MR. LARRY HARRIS**  
Ms. Eloise Rains

**MR. WILLIAM CYLE (PETE) HENDRIX JR.**  
Mr. and Mrs. Joe Fowlkes

**MR. AND MRS. L.D. AND DOT HENDRIX**  
Mrs. Virginia G. Cole

**MR. DON MARK HENEGAR**  
Mr. and Mrs. Lanny Markum

**MRS. CYNTHIA HENRY**  
Mr. and Mrs. Robert M. Simpson

**MRS. PANSY HENRY**  
Mr. and Dr. Barry Bishop  
Paul Bishop  
Mr. and Mrs. Bob Cole  
Mr. and Mrs. Donald K. Cook

**MRS. MARGARET HERNDON**  
Ms. Judy Cofer  
Mr. and Mrs. Aaron B. Herren

**MR. BOB HERRMAN**  
Mr. and Mrs. Marvin L  
Whitworth

**MR. JOE "DICKEY" HILL**  
Mr. and Mrs. Barry T. Kelton

**MRS. MARION HOLT**  
Mrs. Donna Warren

**MS. MELBA HOPKINS**  
Mr. and Mrs. David Jent

**MR. AND MRS. STAN HORNBAKER**  
Ms. Janet Morgan

**MR. HUGH HORROCKS**  
Mrs. Linda Horrocks

**MR. JAMES HOWELL**  
Mr. and Mrs. Robert M. Simpson  
Sweetwater Church of Christ

**MR. JIM HUSBAND**  
Mr. and Mrs. Marvin L  
Whitworth

**MR. TED INGRAM**  
Mrs. Virginia Wright

**MR. HERMAN JACKSON**  
Mr. Max W. Henry

**MS. ANNE JACOBS**  
Ms. Tirri T. Parker

**MS. NELLIE JENKINS**  
Ms. Shannon McFarlin

**MR. GEORGE JENNINGS**  
Corders Cross Roads Church of

Christ  
Mr. and Mrs. Stanley W. Jean

**IVY JOHNSON**  
Mr. and Mrs. Brian L. Johnson

**MR. WALTER JOHNSON**  
Mr. and Mrs. James A. England

**MR. KILLOUS JOINER**  
Mr. and Mrs. Jimmy Gillespie

**MR. AND MRS. BOB JONES**  
Mr. and Mrs. David A. Loyd

**MR. GUY JONES**  
Mr. and Mrs. David A. Loyd

**MRS. KATHRYN KELLEY**  
Ms. Teri Scallorn

**MS. JEAN KENNEDY**  
Mr. and Mrs. Charles L. Coulter

**MR. BILL KING**  
Mr. and Mrs. William M. Alsop  
Mr. and Mrs. Kevin Dodge  
Mr. and Mrs. Shawn R. Everson  
Mr. and Mrs. Thomas H. Holland  
Mr. and Mrs. David Jent  
Ms. Ethel Jane Moore  
Mr. and Mrs. Daniel E. Potter  
Mr. and Mrs. James R. Shockley  
Ms. Peggy L. Upton  
Mr. and Mrs. Mike T. Yuhas

**MS. MELBA JEAN KING**  
North Cobb Church of Christ

**MR. REDMON KING**  
Mr. and Mrs. William M. Alsop  
Belvidere Church of Christ  
Deangelis Diamond Construction  
Mr. and Mrs. Kevin Dodge  
Mr. and Mrs. Shawn R. Everson  
Mr. and Mrs. Jerry Fitzgerald  
Mr. and Mrs. Joe Fowlkes  
Mr. and Mrs. Randal L. Hatchett  
Mr. and Mrs. David H. Heffington  
Ms. Tamela Heffington  
Mr. and Mrs. Aaron B. Herren  
Mr. and Mrs. Thomas H. Holland  
Mr. and Mrs. David Jent  
Ms. Ethel Jane Moore  
Mr. and Mrs. Daniel E. Potter  
Mr. and Mrs. George H. Quigley  
Mr. and Mrs. James R. Shockley  
Mr. and Mrs. Conrad L. Slate  
Ms. Mary Ann Smiley  
Mr. and Mrs. James W. Thomas  
Ms. Peggy L. Upton  
Mr. and Mrs. Mike T. Yuhas

**MS. SEARCY DIANNE KING**  
Ms. Eloise Rains

**MR. PHIL LANCE**  
Mr. and Mrs. Robert E. Williams

**MR. JOE LANCHASTER**  
Mr. and Mrs. David Jent

**MR. MAC LANDMAN**  
Mr. and Mrs. Bret Hartle

**MS. MILDRED LASSITER**  
Mr. and Mrs. S. M. Boyd

**MR. TOM LEACH**  
Mrs. Mary Lou Leach

**MR. JOSHUA LEDFORD**  
Mr. and Mrs. David Jent

**MR. ANDREW LOVINGOOD**  
Mr. and Mrs. Christopher Lovingood  
Mr. and Mrs. Danny R. McKinney

**MR. BUD LOVINGOOD**  
Mrs. Donna Warren

**MR. BOBBY LOWERY**  
Ms. Sherry Earnheart

**MRS. DONNA LUSSIER**  
Mr. and Mrs. Brian King

**MR. AND MRS. DAVID MACON**  
Mr. and Mrs. A. R. Slate

**MR. BILL MADDOX**  
Ms. Monica Maddox

**MR. JOHNNY MARCONI**  
Ms. Donna Prince

**MS. KRISTI MARCONI**  
Ms. Donna Prince

**MS. JENNY MARTIN**  
North Jackson Church of Christ

**MR. JIM MARTIN**  
Mr. and Mrs. David Jent

**MR. VALTON MARTIN**  
Mr. and Mrs. David Jent

**MR. CHARLES MATHENY**  
Ms. Marlys A. Frogge

**MR. WILLIAM E. "BILLY" MAYFIELD**  
Mrs. Virginia G. Cole

**MR. R. W. MCALISTER**  
Dr. George H. Wright

**MR. RICHARD MCCLANHAN**  
Mr. and Mrs. Bruce Wallace

**MRS. PATRICIA MCHAFFIE**  
Mr. and Mrs. Jimmy Gillespie  
Mrs. Irene Smith

**MRS. CYNTHIA LYNN MCKEE SAWYER**  
Anonymous Individual

**MR. PAUL MCMAHAN**  
Mr. and Mrs. Bruce Wallace

**MR. PAUL MERRITT**  
Mr. and Mrs. Caswell H. Merritt

**MRS. GLENDA MILLIGAN**  
Mr. and Mrs. David Jent

**MRS. LISA MINNICH**  
New Union Church of Christ

**MS. MARTHA MINTON**  
Mr. and Mrs. Richard F. Ayers  
Ms. Joyce J. Ealy

Financial Product and Services, Inc.  
Mr. and Mrs. David Ford  
Mr. and Mrs. Herschel A. Hearn  
Main Street Church of Christ  
Mr. and Mrs. Gary Maxwell  
Mr. and Mrs. Jack Medling  
Mrs. Dorris Fly Parkins  
Mr. and Mrs. Wyatt H. Pickler III  
Mr. and Mrs. Samuel E. Pryor  
Mr. and Mrs. John Rose  
Ms. Linda S. Wright

**ELLA MARIE MONTGOMERY**  
Mr. and Mrs. Dillard W. Masingale

**MR. FOSTER MOON**  
Mrs. Betty Cannon

**MRS. PEGGY JANE MOON**  
Mrs. Betty Cannon

**MRS. VIRGINIA MOON**  
Mrs. Betty Cannon

**MR. BILL MOORE**  
Mr. and Mrs. Ivy Hillis

**MR. HOMER MULLINS**  
Corders Cross Roads Church of  
Christ  
Ms. Brenda Jean  
Mr. and Mrs. Stanley W. Jean

**MR. LUIE NEWBERRY**  
Mr. John Sisco

**MR. JOE NEWTON**  
Pinson Church of Christ

**MS. ZELLA NICKELL**  
Mr. and Mrs. Bruce Wallace

**MS. MYRA NIX AGEE**  
Mr. and Mrs. J. C. Short

**MR. JACK NOVODOFF**  
Mr. and Mrs. Marvin L. Whitworth

**MR. DONALD OLDFIELD**  
Mr. and Mrs. Bruce Wallace

**MR. JOHN O'NEAL**  
Mr. and Mrs. David Jent

**MR. HARDY LEE OSBORNE**  
Mr. Thomas Osborne

**MS. MARY L. OSBORNE**  
Mr. and Mrs. John T. Foster

**MS. NELL OVERTON**  
Ms. Melinda Cross  
Mr. and Mrs. Harald Melson  
Dr. and Mrs. Donald P. Wright

**MR. ROY PASSONS**  
Mr. and Mrs. Robert F. Carter

**MS. JOAN PATTERSON**  
Anonymous Individual

**MR. EDDIE PAYNE**  
Scarboro Church of Christ

**MS. CAROLYN PEARL**  
Mrs. Nan Frazer Smith

**MRS. FAYE PHILLIPS**  
Mr. and Mrs. Robert E. Williams

**MRS. GEORGIA PIERCE**  
Mr. and Mrs. Jerry L. Whitehead

**MRS. FANAJO PORTER**  
Dilton Church of Christ

**MS. ANNA M. POSEY**  
Ms. Barbara T. Rader  
Ms. Joan Shankle

**MR. ED POTTS**  
Mr. and Mrs. David Jent

**MR. LARRY PRICE**  
Mr. and Mrs. Ralph T. Upton

**MR. DALVIS PRINCE JR.**  
Ms. Donna Prince

**MR. JOHN FORD PUCKETT**  
Ms. Amy Corley

**MR. AND MRS. JESSE RAY QUIRK**  
Spring Hill Church of Christ

**MS. SHEILA RAGAN**  
Mrs. Virginia Wright

**MR. JACK RAINES**  
Laguado Church of Christ

**MR. NIMMAGADDA NARASIMHA RAO**  
Ms. Sirisha Nutalapati

**MS. APRIL DIANE REAGAN**  
Mr. Eddie Brown

**MR. BUDDY RECORD**  
Mr. and Mrs. Charles R. Boyd  
Mr. and Mrs. Thomas F. Harbin, Jr.  
Ms. Connie Johnson Stewart  
Ms. Ruby Thompson  
Union Grove Baptist Church

**MRS. MARGARET RECORD**  
Mr. and Mrs. Walder J. Record

**MR. MIKE REED**  
Mrs. Donna Warren

**MRS. MARY LEE RICHARDS**  
Mr. Gary Richards

**MR. AND MRS. BARCLAY RILEY**  
Mr. Mary L Moore

**MRS. MARILYN RILEY**  
Otter Creek Church of Christ  
Mr. and Mrs. Bill Rieder  
Mr. and Mrs. Fletcher Srygley  
Mr. and Mrs. Randal W. Wilcher

**MRS. PATRICIA ROBERTSON MCHAFFIE**  
Mrs. Patricia S. Evans

**MR. HALL ROLAND**  
Mr. and Mrs. David and  
Ingrid Roland

**MRS. CAROLYN RONK**  
Ms. Sherry Earnheart

**MR. AND MRS. CHARLES ROUSE**  
Ms. Connie Leftwich

**MR. GERALD SANDERS**  
Mrs. Libby Sanders

**MS. RAE SANDERS**  
Ms. Kay Freeman  
Ripley Church of Christ

**MR. AND MRS. W.L. SANDERS**  
Mrs. Libby Sanders

**MRS. LOUISE SATTERFIELD**  
Mr. and Mrs. Thomas H. Holland

**MS. LINDA SCHLIMMER**  
Mrs. Frances B. Davison

**MR. RODNEY SCHLIMMER**  
Mr. and Mrs. Robert F. Carter

**MRS. BERTHA MAE SCOTT**  
Mr. and Mrs. Bret Hartle  
Mr. and Mrs. Rodney Neilson

**MR. JIMMY SCOTT**  
Ms. Eloise Rains

**MR. HAL SHORT**  
Dr. and Mrs. John E. Petty

**MR. GENE SKELLEY**  
Mr. and Mrs. Larry G. Carden  
Mr. and Mrs. Steve Carmack  
Mr. and Mrs. Jerry B. Escue  
Dr. and Mrs. Bobby C. Higgs  
Ms. Jamie Miller  
Mr. and Mrs. Paul Norris  
Mr. and Mrs. J. D. Weakley

**MR. DWIGHT SMITH**  
Mrs. Irene Smith

**MRS. FANNY SMITH**  
Mr. and Mrs. David F. Alexander  
Mr. and Mrs. Steve Blount  
Ms. Annette Cacheiro  
Mr. and Mrs. David Cunningham  
Mr. and Mrs. Joe Fowlkes  
Friends of the Public Library  
Mr. Max W. Henry  
Mr. and Mrs. Brian King  
Mr. and Mrs. Keevin L. Koch  
Mr. and Mrs. David Meek  
Ms. Pauline Mullins  
ORAU Employee Club  
Petersburg High School  
Class of 1963  
Mr. Charles Scott  
Mr. and Mrs. David W. Seay  
Mr. and Mrs. Raymond E. Shafer  
Mr. and Mrs. Richard Toohey

**MRS. HOLLIS SMITH**  
Mr. and Mrs. William M. Alsup  
Ms. Brenda Coleman  
Mrs. Glenda Cotham  
Mr. and Mrs. David A. Mischke  
Mr. and Mrs. William A. Robinson  
Mr. and Mrs. James Stone  
Mr. and Mrs. James W. Thomas

**MRS. KATELYN SMITH**  
Mr. and Mrs. Mike Bost

**MRS. VONETTE SMITH**  
Mrs. Virginia Wright

**MS. ELLIE SNOW**  
Ms. Shannon McFarlin

**MS. DOT SPILLER**  
Mr. and Mrs. Kent Cherry

**MRS. SANDRA KAY STACEY**  
Flat Creek Church of Christ

**MRS. GLENDA SUE STEPHENS**  
Mr. and Mrs. Robert F. Carter

**MR. TRAVIS STOKES**  
Mr. and Mrs. Jimmy Gillespie  
Mrs. Irene Smith

**MRS. CORRINE SUGGS**  
Dr. George H. Wright

**MR. JAMES SULLIVAN**  
Mr. and Mrs. Edmund R. Briley

**MR. RONNIE MILTON SUTTON**  
Mrs. Irene Smith

**MR. MIKE TALLENT**  
Mrs. Sandra Sue Corn

**MR. BILL TANKERSLEY**  
Ms. Laura Lea Jent

**MS. TERESA THOMPSON**  
Anonymous Individual

**MR. CLIFFORD RAY THRASHER**  
Mr. Billy Caldwell  
Cleston B. Daniels, P.C.  
Ms. Jean W. Foster  
Mr. and Mrs. Stanley Holt Harris  
Mr. and Mrs. Jerry Keen  
Ms. Anita L. Peterman  
Mr. and Mrs. Jesse W. Williams

**MR. RANDALL TIDWELL**  
Mr. and Mrs. Thomas H. Holland

**MRS. CAROLYN TOWNSEND JONES ALLEN**  
Mrs. Virginia G. Cole

**MS. CAROLYN ROSE TRITT**  
Mr. and Mrs. David Brinkley  
Ms. Rebekah McElhannon

**MS. DOLLY TURNER**  
Red Hill Church of Christ

**MR. RON TURNER**  
Mr. and Mrs. Robert F. Carter  
Cedar Lane Church of Christ  
Ms. Gladys Jackson Parks  
Ms. Betty Reese  
Mr. and Mrs. D. T. Wilson

**MR. RONALD LEE TURNER**  
Ms. Patricia Jacobs

**MR. DON VANNATTA**  
Mr. and Mrs. Edmund R. Briley

**MR. JOHN VERELL**  
Mr. and Mrs. W. J. Pickler

**MRS. VIRGINIA**  
Ms. Donna Prince

**MRS. JANICE WALDEN**  
Mr. and Mrs. Aaron B. Herren  
Mr. and Mrs. Thomas H. Holland

**MR. BOB WALKER**  
Ms. Glenda Menees

**BRO. JAMES WATKINS**  
Mr. and Mrs. David Jent

**MR. J.C. WEAVER**  
Corders Cross Roads Church of  
Christ  
Mr. and Mrs. Stanley W. Jean

**MR. AND MRS. MEREDITH WEBB**  
Ms. Lynda A. Webb

**MRS. L'ACHANTA WEBSTER**  
Mr. and Mrs. Billy Booker

**MS. BETTY WEST**  
Mr. and Mrs. David Jent

**DR. AND MRS. C. BRUCE WHITE**  
Mr. and Mrs. James W. Costello  
Madison Church of Christ

**MS. MARY JESSIE WHITE**  
Mr. and Mrs. Joe Fowlkes

**MRS. PAMELA WHITLEY**  
Mrs. Marcie Riis

**MRS. GWENDOLYN WILES**  
Mr. and Mrs. David Jent

**MRS. BETTY WILSON**  
Mr. and Mrs. Steven K. Gilbert

**MR. JACK WILSON**  
Anonymous Individual

**MR. AND MRS. MICHAEL WILSON**  
Mr. and Mrs. David Jent

**MR. DON BRUCE WINTERS**  
Mr. and Mrs. Jerry Winters

**MR. KENNETH "WOODY" WOOD**  
Mr. and Mrs. Jimmy Gillespie  
Mrs. Irene Smith

**MS. TINA WOOD**  
Mr. and Mrs. Bret Hartle

**MRS. ANNE L. WRIGHT**  
Mr. Robert Davidson  
Mr. James Robert Walker  
Mr. and Mrs. Thomas C. Whitsitt

**MRS. BARBARA ZUMBRO**  
Mr. and Mrs. Roger Busler  
Ms. Jan Claire Rost



**REVENUE AND EXPENSE SUMMARY**  
(Excluding Depreciation)  
July 1, 2021–June 30, 2022

	Admin. & Develop.	Spring Hill	N. Central	West TN	East TN	TOTAL	Budget	Var	Var %
<b>REVENUE</b>									
Contributions		875,441	1,249,996	370,173	198,335	2,693,946	1,582,777	1,111,169	70.2%
Contracts		1,723,798	84,701	648,397	642,977	3,099,872	3,271,914	(172,042)	-5.3%
Other		104,737	0	64,973	40	169,750	186,000	(16,250)	-8.7%
<b>Total Revenue</b>	0	2,703,976	1,334,697	1,083,543	841,352	5,963,568	5,040,691	922,877	18.3%
<b>EXPENSES</b>									
Personnel	604,712	1,432,361	86,366	852,579	656,060	3,632,078	3,987,271	(355,193)	-8.9%
Operating Costs	455,353	435,307	113,121	276,469	231,148	1,511,398	1,430,356	81,042	5.7%
<b>Sub-Total Expense</b>	1,060,065	1,867,668	199,487	1,129,048	887,208	5,143,476	5,417,627	(274,151)	-5.1%
	(604,712)	272,120	30,236	181,413	120,942	0			
	(455,353)	204,909	22,768	136,606	91,071	0			
<b>ALLOCATE ADMIN. &amp; DEVELOPMENT</b>	(1,060,065)	477,029	53,003	318,019	212,013	0			
<b>Total Expense</b>	0	2,314,697	252,491	1,447,068	1,099,221	5,143,476	5,417,627	(274,151)	-5.1%
<b>REVENUE OVER (UNDER) EXPENSE</b>	0	350,279	1,082,206	(363,525)	(257,869)	820,092	(376,936)	1,197,028	
<b>ENDOWMENT DRAW</b>						376,936	376,937	(1)	
<b>REVENUE OVER (UNDER) EXPENSE AFTER ALLOCATED ENDOWMENT</b>						1,197,028	1	1,197,027	
<b>ENDOWMENT DRAW</b>						0			
Other-Operations*								0	
<b>ENDOWMENT DRAW (furniture and appliances for new SH campus)</b>						0			
<b>REVENUE OVER (UNDER) EXPENSE</b>						1,197,028			
<b>PROVIDING DIRECTION CAMPAIGN</b>									
Revenue	0	1,575,732	0	85,036	12,911	1,673,679	20,000	8268.4%	
Expenses	7,599	105		0	0	7,704	20,000	-61.5%	
<b>Total Gain/(Loss)</b>	(7,599)	1,575,627	0	85,036	12,911	1,665,975	0		

Detailed financial information will be provided upon request. If you need additional information, please contact:

**BRIAN KING, President**  
c/o Tennessee Children's Home  
P.O. Box 10  
Spring Hill, TN 37174



P.O. Box 10  
Spring Hill, Tennessee 37174

NON-PROFIT ORG  
US POSTAGE  
PAID  
NASHVILLE TN  
PERMIT # 3731



# “YOU CAN HELP!”

There are many ways to support **Tennessee Children's Home**. Our mission of spreading faith, hope and love cannot happen without the generous contributions of individuals who care.

The cost of maintaining our services and programs is greatly offset by your donations, so please join us in our work and become a part of a promising future for Tennessee's children and families.



**Sharing Faith, Hope, and Love since 1909**

Donations can be made by check through the U.S. Postal Service using this address: P.O. Box 10 • Spring Hill, TN 37174

Tennessee Children's Home is a non-profit 501(c)3 organization.

[www.tennesseechildrenshome.org](http://www.tennesseechildrenshome.org)